



## *wristwarmer with squarepattern*

by Anke Hedfeld  
[www.wollvictim.de](http://www.wollvictim.de)

# wristwarmer with squarepattern

by Anke Hedfeld  
www.wollvictim.de



These wristwarmers are crocheted in two colors with a square pattern from single crochets and raised double crochets. They fit small hands.

**Finished measurements:** width 4" (10 cm), height 6,7"(17 cm), circumference 8" (20 cm)

**Yarn:** Lana Grossa Windsor 55 % merino wool, 31 % super kidmohair, 14 % acrylic fibre, 1 skein 009 anthrazit, 1 skein 008 grau

**Hook:** Size 7 (4,5 mm) or size to obtain gauge,

**Notices:** 1 blunt needle for weaving in ends

**Gauge:** 16 st and 20 rows = 4" in sc

## Pattern stitches:

The wristwarmers are crocheted rowwise and are closed with sl st to form a ring. Turn work and start every row with a ch and be sure to work the starting stitch of each row directly into the last stitch of the row below.

The pattern is done in sc and rdc. Rdc are worked around one sc into the second row below. Work WS in sc using color 009 only.

Before starting, it would be wise to make four little balls of yarn color 008 (4.5 yards or 4 m are sufficient) for working the rdc lines.

## Wristwarmer:

Ch 33, join with sl st to form a ring.

Row 1 (RS): Ch, work 1 sc in each ch, join with sl st.

Row 2 (WS): Turn work, ch, work 1 row sc, join with sl st.

Row 3 (RS - starting the pattern) to Row 16 (WS): Turn work, ch, \*2 sc 1rdc\*, repeat \*\*10 times following the diagramm for

using colors.

Join every row with sl st. Work every WS in sc using color 009.

Row 17 (RS - starting the thumb): Turn work, ch, 16 st following diagramm, then 3 sc in 1 st, 16 st following diagramm. Join the round with sl st.

Row 18 (WS): Turn work, ch, 34 sc, join round with sl st.

Row 19 (RS): Turn work, ch, 16 st following diagramm, then 2 sc in 1 st, 1 sc, 2 sc in 1 st, 16 st following diagramm. Join the round with sl st.

Row 20 (WS): Turn work, ch, 36 sc, join round with sl st.

Row 21 (RS): Turn work, ch, 16 st following diagramm, then 2 sc in 1 st, 3 sc, 2 sc in 1 st, 16 st following diagramm. Join the round with sl st.

Row 22 (WS): Turn work, ch, 38 sc, join round with sl st.

Row 23 (RS): Turn work, ch, 16 st following diagramm, then 2 sc in 1 st, 5 sc, 2 sc in 1 st, 16 st following diagramm. Join the round with sl st.

Row 24 (WS): Turn work, ch, 40 sc, join round with sl st.

Row 25 (RS): 16 st following the pattern, skip the 9 st of the thumb with 1 ch, 15 st following diagramm.

Row 26 (WS): Turn work, ch, 32 sc, join round with sl st.

Row 27 (RS) to Row 34 (WS): Follow the diagramm. Fasten off.

Work second wristwarmer in the same way.

## Finishing:

Weave in loose ends. Steam or wet-block wristwarmers.

## Abbreviations:

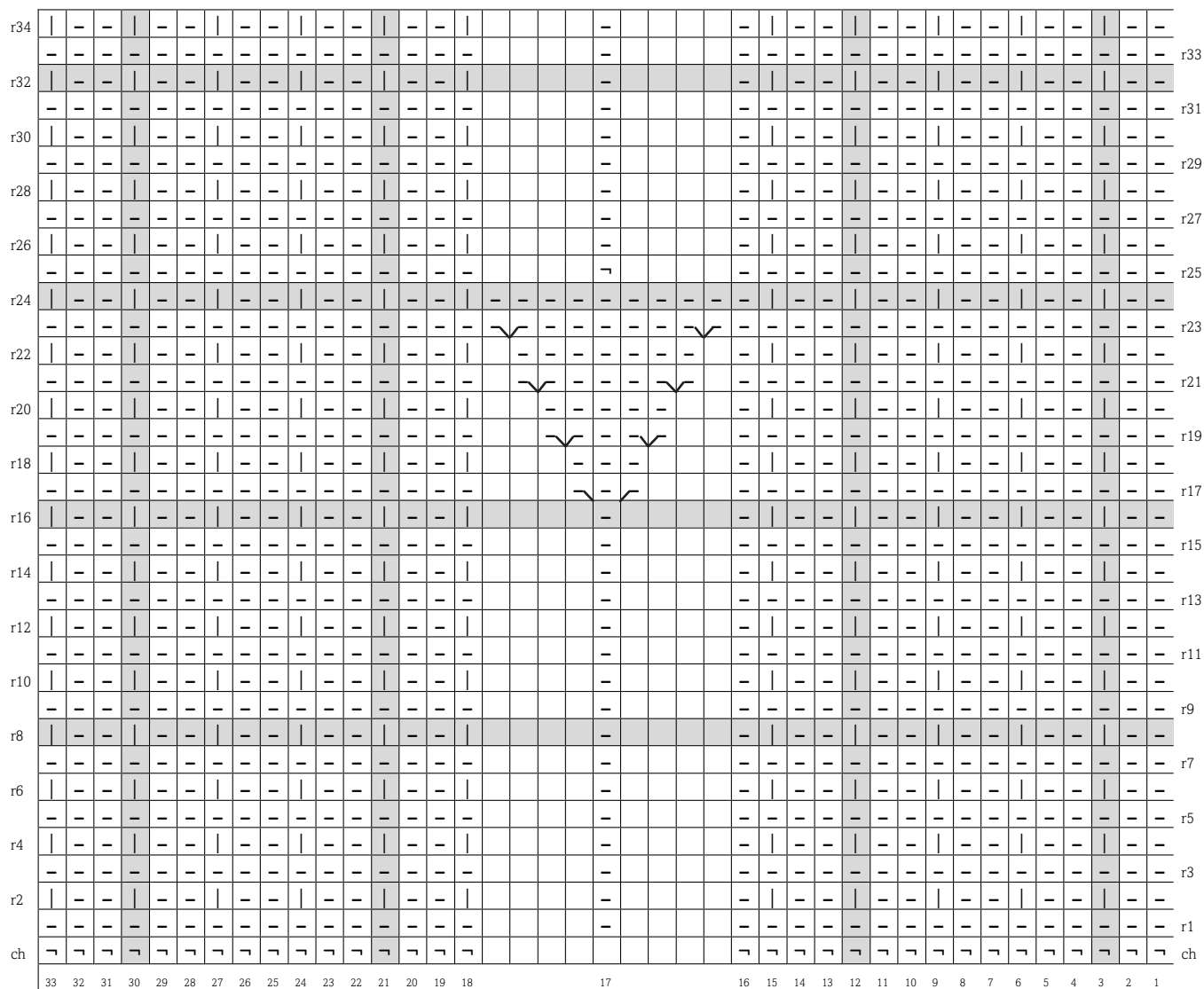
ch = chain

sc = single crochet

sl st = slip stitch

rdc = raised double crochet

## Crochet diagramm:



⌞ = chain

— = single crochet

| = raised double crochet

∩∩∩ = 3 sc in 1 sc

∩ = 2 sc in 1 sc

### color scheme:

□ = color 009 anthrazit

■ = color 008 grau

